

# ATFM Daily Plan - Saturday 04 May 2024

ADP Version 1



Airport	Planned GDPs	Total Arr/Dep	Affected Flights	Total Ground Delay	Av. Ground Delay	36 Hr Synoptic Forecast
YSSY	YSSY GDP-A 2000-0100	687	85	1,419	16.70	
YMML	YMML GDP-A 2000-0400	542	97	2,475	25.50	
YBBN	NONE	382	n/a	0	0.00	
YPPH-A	NONE	209	n/a	0	0.00	
YPPH-D	NONE		n/a	0	0.00	
<b>Totals</b>		<b>1820</b>	<b>182</b>	<b>3,894</b>	<b>13.90</b>	

\* denotes a revision has taken place

### ATFM Daily Plan Summary Notes

YSSY	Heavy rains with reduced visibility during showers expected throughout the day. Chance of isolated thunderstorms within the TMA in the evening.
YMML	Chance of fog in the morning expected to clear by early afternoon.
YBBN	Nil significant operational risk/s identified.
YPPH	
Other Significant	Refer NOTAM for latest estimated airborne traffic delay advice.
Change Summary:	[06:59pm] Version 1: Initial.

**Teleconference Details**  
 1800 062 923  
 Participant Code 7207 9651  
 Guest Code 3064#  
  
 NCC: 1800 020 626  
[atfm@airservicesaustralia.com](mailto:atfm@airservicesaustralia.com)

**CAP THREAT: Nil**

**PRM: NOT REQ**

**YMEN SLOT SCHEME: NO**

### Issues expected to impact service delivery

Location	Issue/NOTAM Details
YPPH	C325/24 RWY 06/24 CLOSED DUE WIP FM 05 032330 TO 05 040900
YPPH	C304/24 RWY 03/21 CLSD FM 05 022330 TP 05 030400

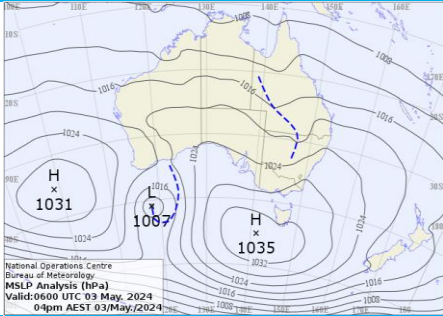
# Network Weather Overview

From now to +72 hours

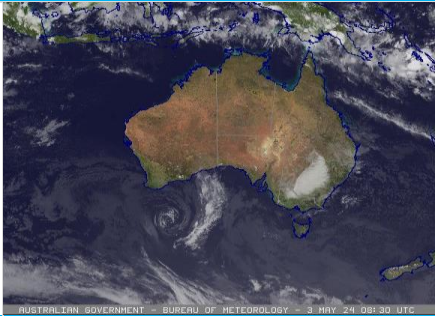
## Saturday 04 May 2024

### Weather Overview

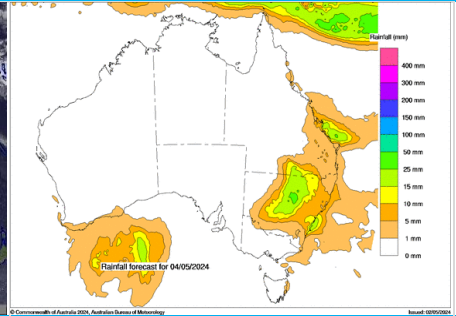
Mean Sea Level Pressure



Satellite Picture



Rainfall Outlook for tomorrow



### Weather impact risk assessment Major Airports

	Brisbane	Melbourne	Perth	Sydney
<b>AM Saturday</b>	Light showers. Cloud 2500-3000ft. Light S to SW winds, tending SE late morning.	Very low cloud and fog in the TMA. Chance of cloud below 300ft or fog at the airport until mid-morning, cloud lifting late morning. Light W winds, turning S to SW late morning.	Cloud 3000-5000ft. Light E to SE winds turning S to SW late morning.	Showers, increasing late morning. Cloud 1000-1500ft. Light SW winds turning S to SE during the morning.
<b>PM Saturday</b>	Showers, mainly inland. Cloud 2500-4000ft. Light to moderate E to SE winds.	Becoming CAVOK, then late evening fog patches. Light S'ly winds turning W to SW in the evening.	Cloud 4000-5000ft. Light to moderate S to SW winds.	Rain, heavy at times in the evening. Chance of a thunderstorm late evening. Cloud 800-1500ft. Light to moderate SE winds.
<b>AM Sunday</b>	Showers increasing. Cloud 2000-2500ft. Light SW winds turning E to SE late morning.	Fog likely in the TMA, chance at the airport. 500-1500ft cloud. Light W to SW winds.	Cloud above 4500ft. Light SE winds.	Rain, heavy at times. Chance of thunderstorms. Cloud 800-1500ft. Light to moderate S to SE winds.
<b>PM Sunday</b>	Showers. Possible thunderstorms within the TMA. Cloud 2000-3000ft. Light winds, varying SE to NE.	Cloud around 2000ft. Light to moderate S to SE winds.	Cloud above 4500ft. Light to moderate SW winds developing.	Rain, heavy at times. Chance of thunderstorms. Cloud 1000-1500ft. Moderate S to SE winds.
<b>AM Monday</b>	Cloud above 3000ft. Showers offshore. Light SSW to S winds.	Fog N TMA, chance cloud 1000-2000ft. Light S to SW winds. SE winds 15-20 knots aloft.	Showers developing offshore with cloud 1500-2000ft. Light E to SE wind turning SW late morning.	Cloud 2000-3000ft. Showers. Gusty S to E winds.
<b>PM Monday</b>	Cloud above 4000ft, chance 2500ft evening. Showers offshore, possibly on the coast in evening. Light to moderate S to SE winds.	Cloud 2500-4000ft. Light and variable winds.	Cloud 2000-3000ft. Light showers offshore. Light to moderate SW winds.	Cloud 2500-3500ft. Showers easing evening. Moderate to fresh S to SE winds, gusty at times in the afternoon.

### Significant other phenomena potentially affecting Australian FIRs

Volcanic Ash (VA) ≥ FL200	Mt. Ruang (Indonesia): Aviation colour code remains RED for the possibility of a high-level eruption. For the latest information refer to <a href="http://www.bom.gov.au/aviation/volcanic-ash/darwin-va-advisory.shtml">http://www.bom.gov.au/aviation/volcanic-ash/darwin-va-advisory.shtml</a>
Space Weather	For latest advisories refer to <a href="http://www.bom.gov.au/aviation/space-weather-advisories/">http://www.bom.gov.au/aviation/space-weather-advisories/</a>
Tropical Cyclones	Nil significant. For the latest information refer to <a href="http://www.bom.gov.au/cyclone/">http://www.bom.gov.au/cyclone/</a>

Weather risk assessment provided by NCC Meteorological Unit – Bureau of Meteorology  
Contact NCCMET for further detail or advice

Phone: 02 6268 4448  
Email: [nccmet@bom.gov.au](mailto:nccmet@bom.gov.au)

Detailed advice from major Airport MET CDM products available at Airservices NOC Portal, <https://www.airservicesaustralia.com/noc/>

# SYDNEY - YSSY GDP-A 2000-0100

Saturday 04 May 2024

## ATFM-CDM Notes

**METCDM Notes:**

[1] 2000-0559: A high pressure system near Tasmania with an onshore airstream across the area. This combined with a low level trough along the coast and an upper low over inland NSW is expected to generate showers, particularly over the sea and coast at first. Cloud 800-1200ft with visibility reduced 2000-3000m in showers/rain. MET CDM rate lowered as showers are more likely to become widespread across the TMA late in the morning (from about 00Z), then increase to rain into the afternoon as the upper low moves slowly eastwards. Surface winds appear likely to vary around W to SW during the first half of the morning, then turning generally SE.

[2] 0600-1259: Rain becoming heavy at times in the evening due to the proximity of the upper low over central NSW and as the associated upper trough tilts over the east. This is also expected to increase the overall instability within the TMA in the evening with the chance of isolated thunderstorms, with this risk more likely late in the evening. In general, the atmosphere appears quite saturated and more conducive to rain but a small x-factor has been applied for the risk of thunderstorms as described (these being more likely over central NSW and offshore). Surface winds returning SW during the evening.

**NCC DLM Notes:**

[Nil DLM Notes]

**SM Notes:**

[Nil SMTM Notes]

## GDP Notes

Heavy rains with reduced visibility during showers expected throughout the day. Chance of isolated thunderstorms within the TMA in the evening.

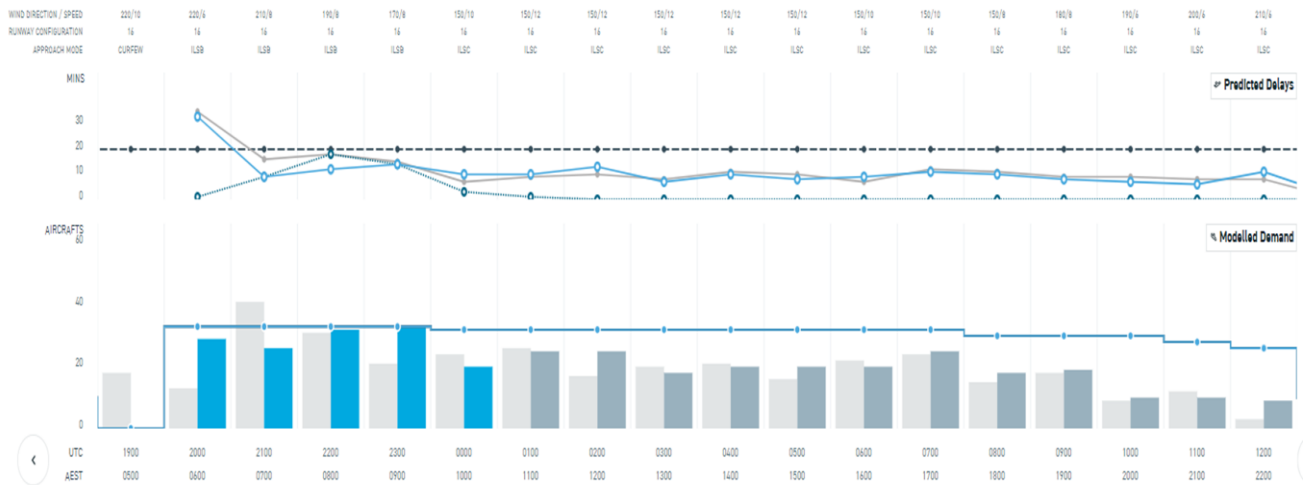
### Tabulated Data

Time (Hour UTC)	032000	032100	032200	032300	040000	040100	040200	040300	040400	040500	040600	040700	040800	040900	041000	041100	041200	0	
Runway Mode	16 ILSC	16 ILSC	16 ILSC	16 ILSC	16 ILSC	16 ILSC	16 ILSC	16 ILSC	16 ILSC	16 ILSC	16 ILSC	16 ILSC	16 ILSC	16 ILSC	16 ILSC	16 ILSC	16 ILSC		
Rate	33	33	33	33	32	32	32	32	32	32	32	32	30	30	30	28	26		

### Segmentation and Notes

METCDM Notes	1	1	1	1	1	1	1	1	1	1	2	2	2	2	2	2	2	2	0
Segmentation	1	1	1	1	1	1	1	1	2	2	2	2	2	2	2	2	2	2	

### Bar Graph



**Legend**

- ERSa airborne delay threshold
- Final CDM rate
- Ground delay (average)
- Current demand
- Initial airborne delay (90th PCTL)
- Modelled demand (no GDP)
- Latest airborne delay (90th PCTL)
- Modelled demand (GDP)
- Final MET rate
- Final SM rate

# MELBOURNE - YMML GDP-A 2000-0400

Saturday 04 May 2024

## ATFM-CDM Notes

**METCDM Notes:**

- [1] 2000-2259: An eddy over Melbourne to the south of the airport with extensive fog/very low cloud in its vicinity. Have proposed a relatively high x-factor to IMCB for the risk of either cloud near ground or fog, as the eddy is expected to be in a more favourable position to recirculate moisture via W or even WSW winds underneath a low inversion. RWY 16/27 indicated due to the increased risk of IMCC requiring RWY 16.
- [2] 2300-0759: The fog should begin to lift however there is a significant risk of fog upstream still being advected to the airport as very low cloud 23-01Z before clearing early afternoon, a gradual increase in MET CDM rate has been proposed. Low cloud may persist over the far southern TMA well into the afternoon. SW winds turning generally S'ly, these should remain relatively light and so continue to be favourable for RWY 16/27.
- [3] 0800-1359: Winds turning WSW in the evening as another eddy forms to the southeast with the risk of some fog patches forming within the TMA late in the evening (x-factor indicated).

NCC DLM Notes:  
[Nil DLM Notes]

SM Notes:  
[Nil SMTM Notes]

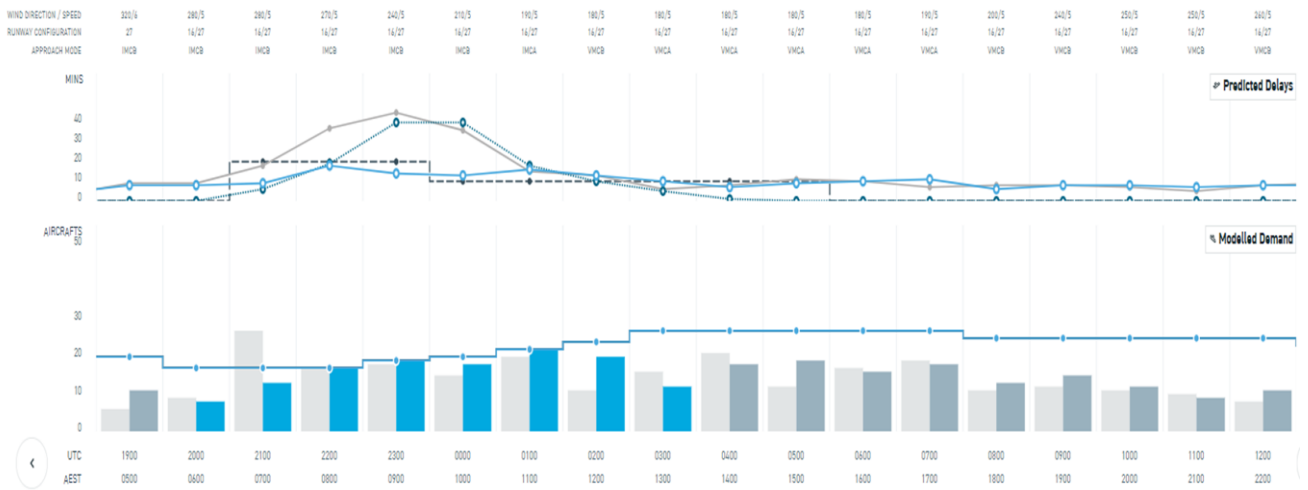
## GDP Notes

Chance of fog in the morning expects to clear by early afternoon.

### Tabulated Data

Time (Hour UTC)	032000	032100	032200	032300	040000	040100	040200	040300	040400	040500	040600	040700	040800	040900	041000	041100	041200	041300
Runway Mode	27 IMCB	27 IMCB	27 IMCB	27 IMCB	27 IMCB	16/27 VMCA	16/27 VMCA	16/27 VMCA	16/27 VMCA	16/27 VMCA	16/27 VMCA	16/27 VMCB	16/27 VMCB	27/34 HN LAHSO	27/34 HN LAHSO	27/34 HN LAHSO		
Rate	17	17	17	19	20	22	24	27	27	27	27	27	25	25	25	25	25	23
Segmentation and Notes																		
METCDM Notes	1	1	1	2	2	2	2	2	2	2	2	2	3	3	3	3	3	3
Segmentation	1	1	1	1	1	1	1	1	2	2	2	2	2	2	2	2	2	2

### Bar Graph



**Legend**

- ERSa airborne delay threshold
- Ground delay (average)
- Initial airborne delay (90th PCTL)
- Latest airborne delay (90th PCTL)
- Final MET rate
- Final SM rate
- Final CDM rate
- █ Current demand
- █ Modelled demand (no GDP)
- █ Modelled demand (GDP)

# BRISBANE - Nil GDP

Saturday 04 May 2024

## ATFM-CDM Notes

**METCDM Notes:**

[1] 2000-1259: A high pressure system near Tasmania with an E to SE airstream across the area. Cloud generally around 2500ft with passing light showers, moving inland in the afternoon with cloud lifting to 3000ft. Additionally, an upper trough/low over NSW is also likely to extend a mid level cloud band over the area with possible light rain at times. X-factor applied for the chance of brief periods of reduced visibility below VMC at any time, and possibly also cloud below 2500ft in the morning. There is the very small chance of thunderstorms well inland in the afternoon, isolated at best. Thunderstorms more likely well west over inland Queensland.

[2] 0100-0859: S to SW surface winds turning through SE to E in the afternoon, returning SE to SW in the evening. Around 1-2 hours uncertainty with the proposed runway changes. With the cloudy conditions, there is a small chance that winds may remain SE enough for RWY 19 to be preferred throughout the afternoon instead.

**NCC DLM Notes:**

[Nil DLM Notes]

**SM Notes:**

[Nil SMTM Notes]

## GDP Notes

Nil significant operational risk/s identified.

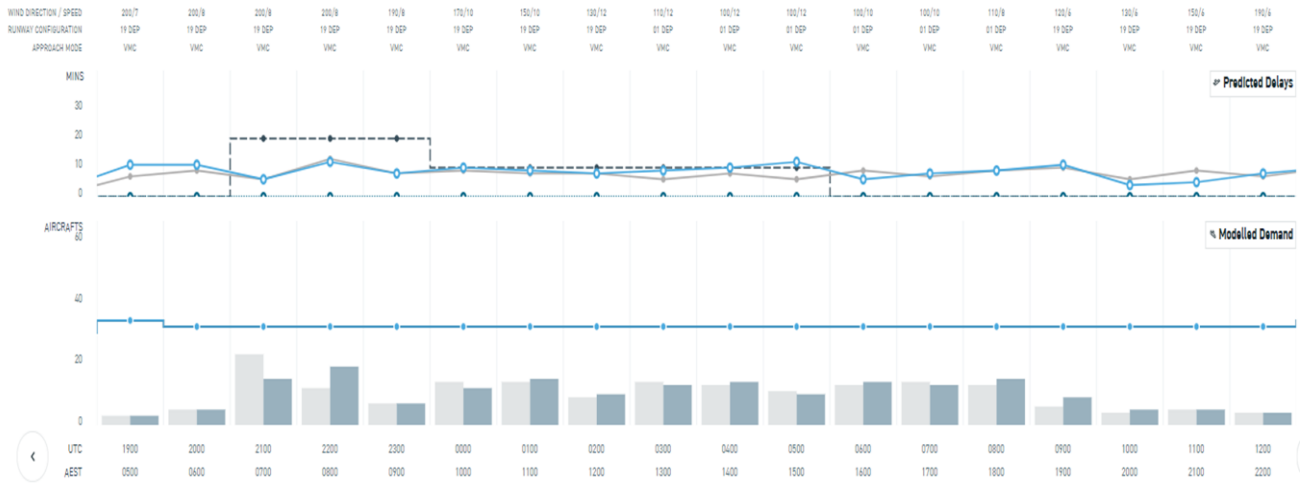
## Tabulated Data

Time (Hour UTC)	032000	032100	032200	032300	040000	040100	040200	040300	040400	040500	040600	040700	040800	040900	041000	041100	041200	
Runway Mode	19 ILS	19 ILS	19 ILS	19 ILS	19 ILS	19 ILS	01 VMC	01 VMC	01 VMC	01 VMC	01 VMC	01 VMC	01 VMC	01 VMC	19 ILS	19 ILS		
Rate	32	32	32	32	32	32	32	32	32	32	32	32	32	32	32	32	32	

## Segmentation and Notes

METCDM Notes	1	1	1	1	1	1&2	1&2	1&2	1&2	1&2	1&2	1&2	1&2	1	1	1	1	0
Segmentation	1	1	1	1	1	1	1	2	2	2	2	2	2	2	2	2	2	

## Bar Graph



**Legend**

- ERSa airborne delay threshold
- ◆ Ground delay (average)
- ◆ Initial airborne delay (90th PCTL)
- ◆ Latest airborne delay (90th PCTL)
- Final MET rate
- ◆ Final SM rate
- ◆ Final CDM rate
- Current demand
- Modelled demand (no GDP)
- Modelled demand (GDP)