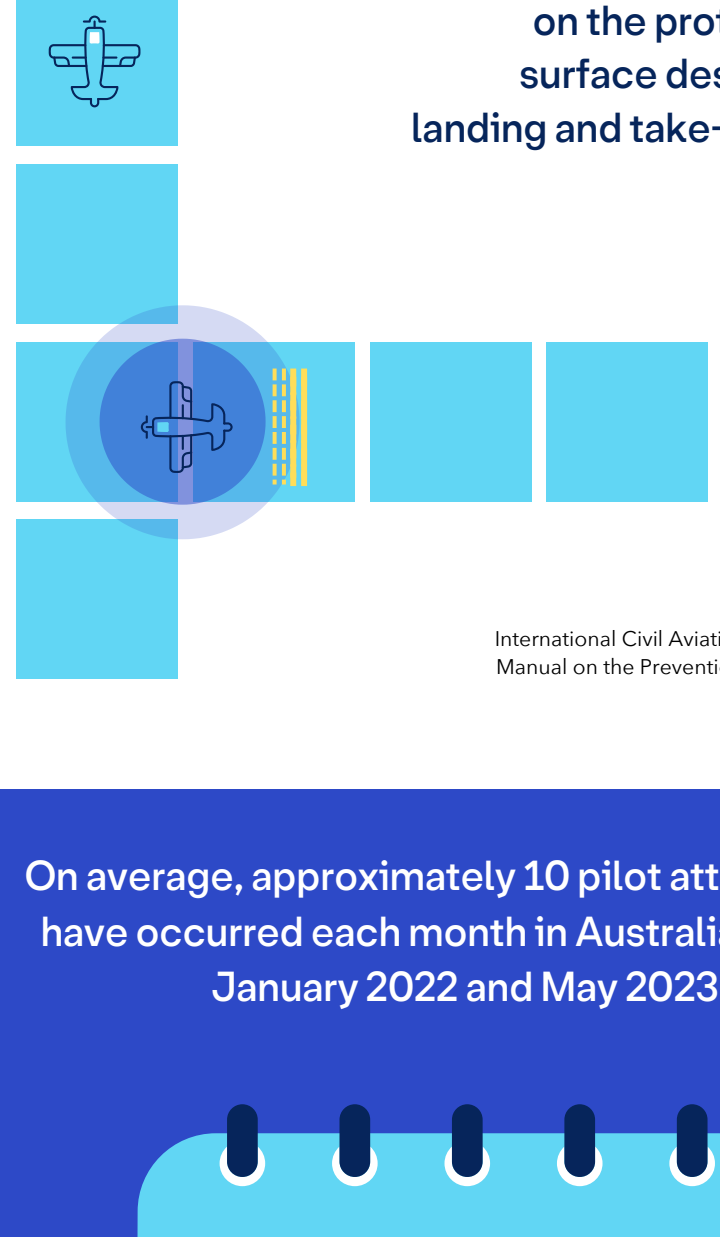


Working together to reduce risk.

Runway Incursions at Metro D Aerodromes

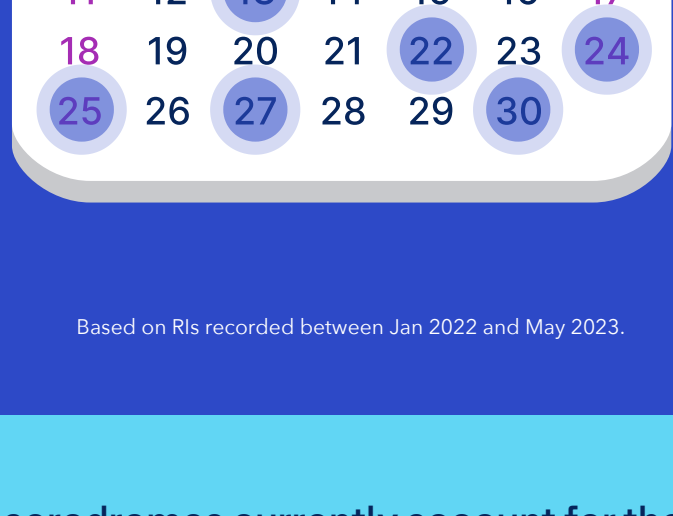
Runway safety risk remains one of the most serious threats to aviation safety.



A runway incursion is an "occurrence at an aerodrome involving the incorrect presence of an aircraft, vehicle or person on the protected area of a surface designated for the landing and take-off of aircraft."

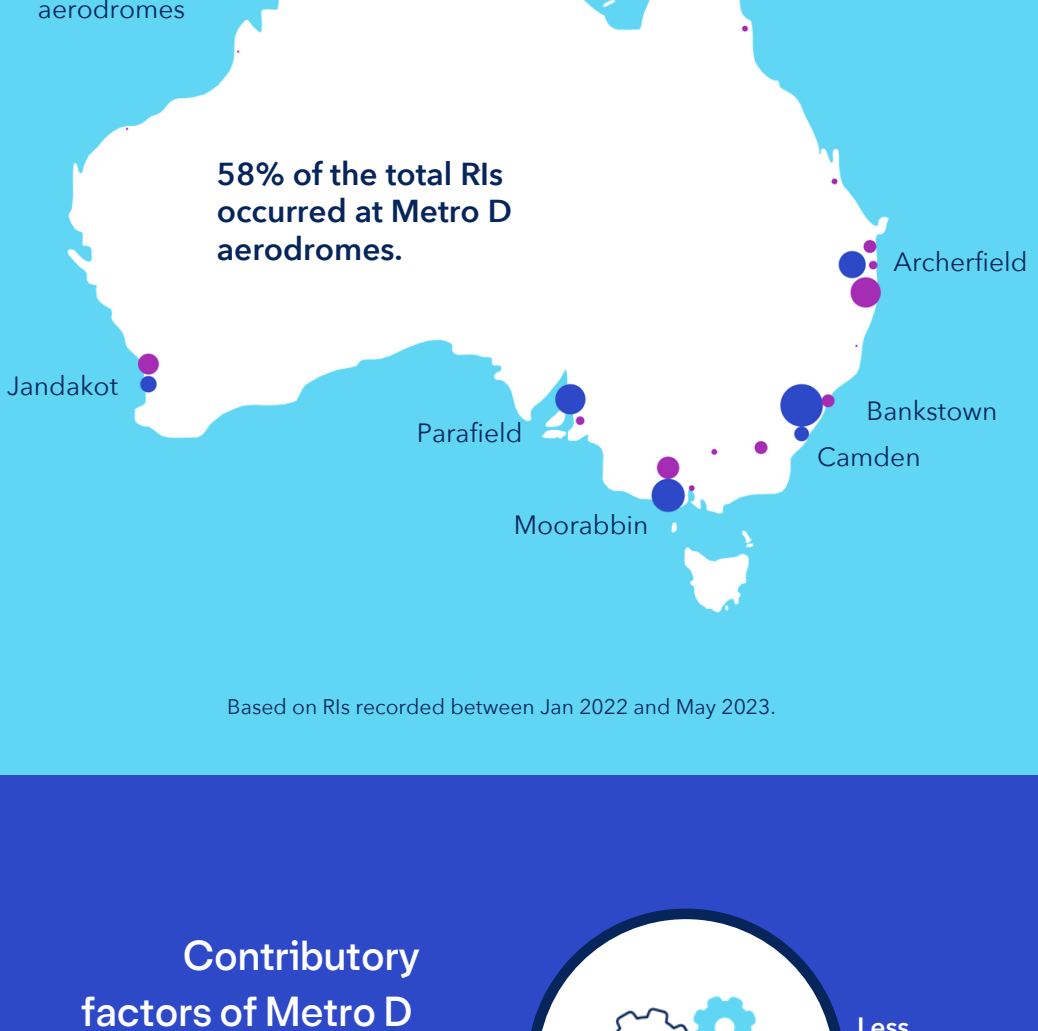
International Civil Aviation Organization (2007). Manual on the Prevention of Runway Incursions

On average, approximately 10 pilot attributed RIs have occurred each month in Australia between January 2022 and May 2023.



Based on RIs recorded between Jan 2022 and May 2023.

Metro D aerodromes currently account for the highest number of pilot-attributed runway incursion locations.

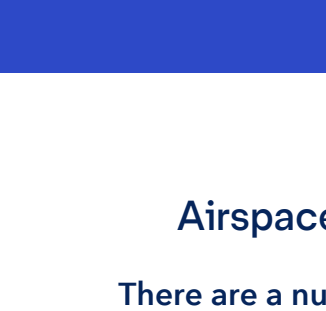


Based on RIs recorded between Jan 2022 and May 2023.

Contributory factors of Metro D aerodrome environments to runway incursions



Less system-level precautions



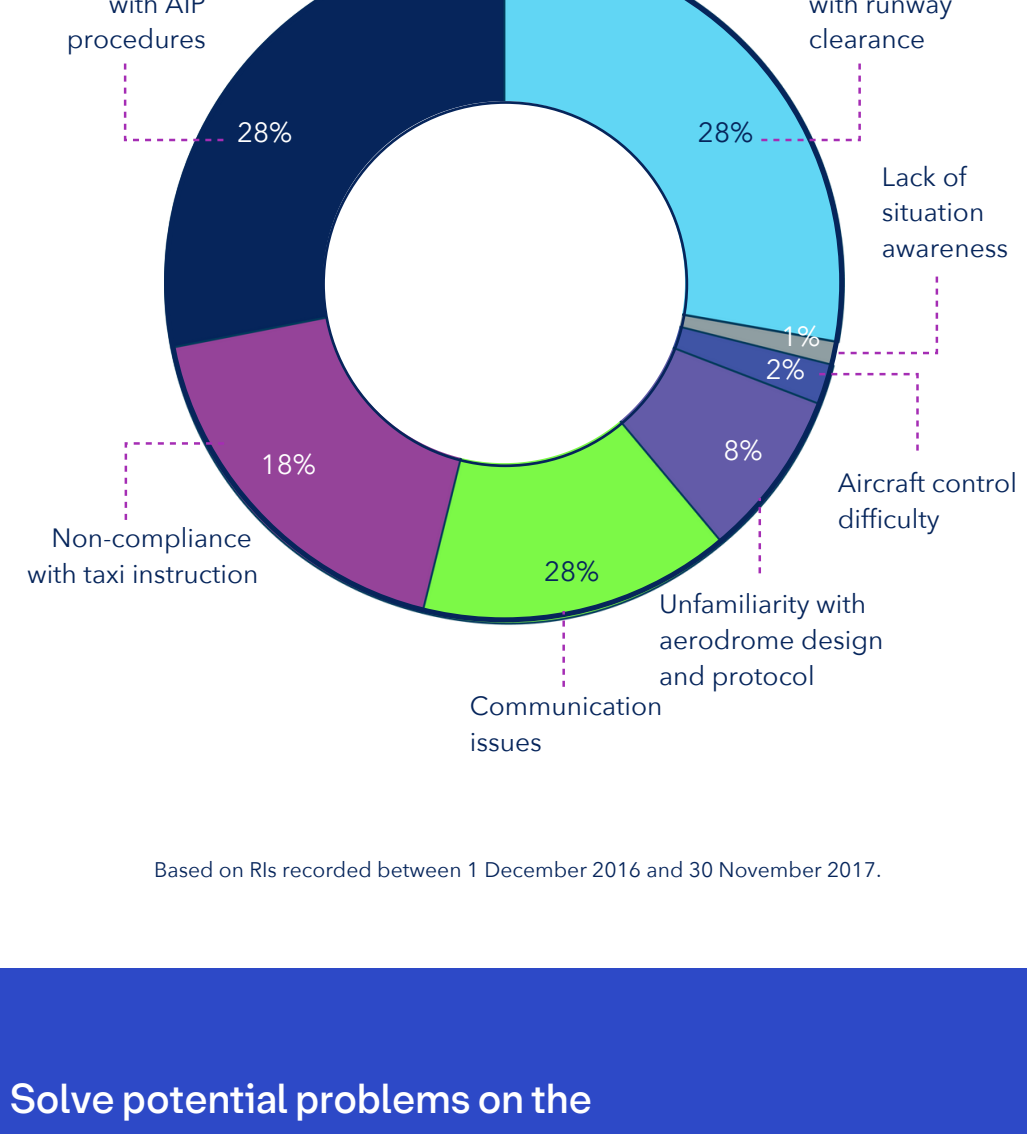
More training and general aviation activities



Aerodrome layout

Airspace and navigation

There are a number of factors that can contribute to pilot-attributed runway incursions.



Based on RIs recorded between 1 December 2016 and 30 November 2017.

Solve potential problems on the ground before you enter the runway.

1. Ensure you have access to current information about local procedures.
2. Familiarise yourself with the layout of the manoeuvring area.
3. Ensure you understand procedures for the type of runway you are using.
4. Familiarise yourself with the kind and frequency of activity at this aerodrome.
5. Familiarise yourself with standard radio calls and readbacks so that you can accurately confirm you understand your clearance.
6. Ensure you know the correct frequency to turn your radio to while operating, your radio is working, and the volume is turned up.

Equip yourself for a safe flight

Equip yourself for a safe flight with knowledge of the current issues contributing to potential risks in your airspace. Learn current threats, errors, and countermeasures as well as lessons learned from past occurrences.

