

ATFM Daily Plan - Tuesday 09 June 2026

ADP Version 3



Airport	Planned GDPs	Total Arr/Dep	Affected Flights	Total Ground Delay	Av. Ground Delay	36 Hr Synoptic Forecast
YSSY*	YSSY GDP-A 2000-2012^	760	87	1,344	15.40	
YMML	NONE	589	n/a	0	0.00	
YBBN	NONE	552	n/a	0	0.00	
YPPH	YPPH GDP-A 0030-1400	551	195	1,547	7.90	
Totals		2452	282	2,891	6.55	

* denotes a revision has taken place

ATFM Daily Plan Summary Notes

YSSY	<p>GDP in effect due to inclement morning conditions. Conditions will be monitored for any changes of significance.</p> <p>Midday Update: CAVOK airport. Chance high-based showers W TMA afternoon. Light to mod NE winds becoming N to NW evening. ATC ADVICE: 429 (215A/215D) Demand remains below capacity for the remainder of the day.</p>
YMML	<p>Nil significant operational risk/s identified at this stage.</p> <p>Midday Update: Few cloud patches 2500-3000ft. High-based showers developing evening, mainly N TMA. Fresh & gusty N to NNE winds. N winds aloft 40-45 knots, increasing 45-55 knots early evening. Headwinds. Turb. ATC ADVICE: 346 (184A/162D) Demand remains below capacity for the remainder of the day.</p>
YBBN	<p>RWY 01R/19L closed as per NOTAM between 0000-0600. Nil significant operational risk/s identified at this stage.</p> <p>Midday Update: Showers. Cloud 2500-4000ft, lower showers. Light to mod SE to ENE winds, becoming S to SW evening. ATC ADVICE: 324 (183A/141D) Demand remains below capacity for the remainder of the day.</p>
YPPH	<p>Nil significant operational risk/s identified at this stage.</p> <p>Midday Update: Light showers, easing afternoon. Cloud 3000-5000ft. Light to mod SW winds, tending S late afternoon, then E to NE evening. ATC ADVICE: 311 (181/130) High demand throughout the next 2 hours and again between 08 and 12z. Possible delays if the demand shifts.</p>
Other Significant	Refer NOTAM for latest estimated airborne traffic delay advice.
Change Summary:	<p>[06:34pm] Version 1: Initial. [07:24am] Version 2: Morning Update [12:41pm] Version 3: Midday Update</p>

Teleconference Details
 1800 062 923
 Participant Code 7207 9651
 Guest Code 3064#

 NOMC: 1800 020 626
atfmu@airservicesaustralia.com

CAP THREAT: NIL

PRM: NOT AVBL DUE STAFF

YMEN SLOT SCHEME: NO

Issues expected to impact service delivery

Location	Issue/NOTAM Details
YMML	C819/26 LAND AND HOLD SHORT OPS (LAHSO) NOT AVBL DUE TWY RESTRICTIONS FM 04 150936 TO 07 140000 EST
YMML	C1191/26 RWY 09/27 CLSD DUE WIP FM 06 100000 TO 06 100600
YBBN	C783/26 ILS 'IBA' 109.5 RWY01R ON TEST, DO NOT USE FALSE INDICATIONS POSSIBLE EXC ON 45MIN PN FOR OPR RQMNTS FM 06 092230 TO 06 100000
YBBN	C780/26 ILS 'IBA' 109.5 RWY01R ON TEST, DO NOT USE FALSE INDICATIONS POSSIBLE EXC ON 45MIN PN FOR OPR RQMNTS FM 06 100530 TO 06 100630
YBBN	C768/26 RWY 01L/19R CLSD DUE MAINTENANCE FM 06 100000 TO 06 100530
YBBN	C766/26 RWY 01R/19L CLSD DUE MAINTENANCE FM 06 090000 TO 06 090600
YBBN	C776/26 ILS 'IBA' 109.5 RWY 01R U/S DUE RWY WIP FM 06 090000 TO 06 090600
YBBN	C781/26 ILS 'IBA' 109.5 RWY01R ON TEST, DO NOT USE FM 06 102230 TO 06 110630

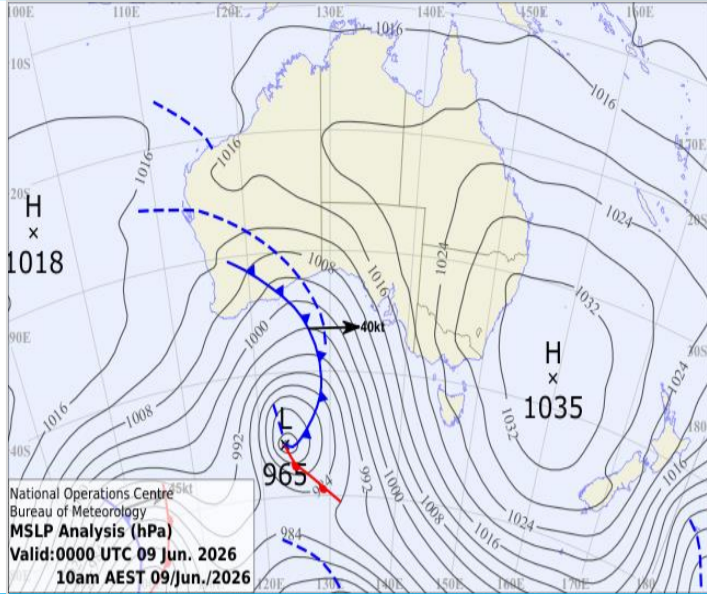
Network Weather Overview

From now to +72 hours

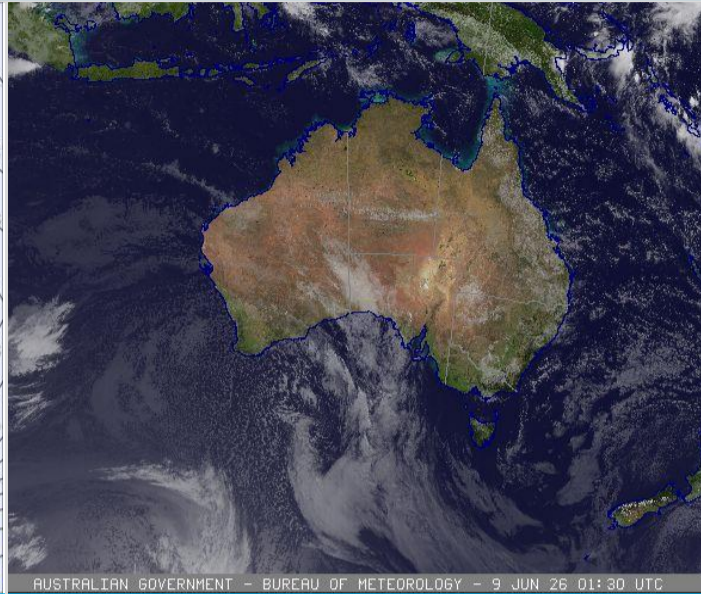
Tuesday 09 June 2026

Weather Overview

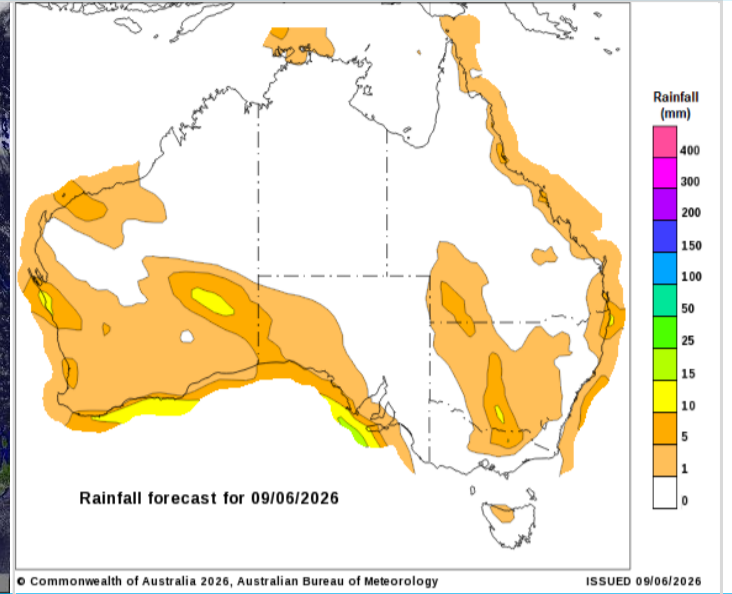
Mean Sea Level Pressure



Satellite Picture



Rainfall Outlook for today



Weather impact risk assessment Major Airports

	Brisbane	Melbourne	Perth	Sydney
PM Tuesday	Showers, contracting towards the coastline evening. Cloud 2500-4000ft, lower in showers. Light to moderate ENE to SE winds becoming light S to SSW evening.	Mostly CAVOK. High-based showers developing in north during the evening. Fresh and gusty N to NNE winds. N winds aloft 40-55 knots. Turbulence and headwinds.	Light showers contracting to the coast during the afternoon and offshore during the evening. Cloud 3000-5000ft, lower in showers. Light to moderate S to SW winds becoming light ESE then NE evening.	CAVOK airport. Showers and 2500-5000ft cloud offshore. Light to moderate N to NE winds becoming light N to NW during the evening.
AM Wednesday	Showers Cloud 2500-3000ft, lower in showers. Inland fog. Light S to SW winds becoming E to SE mid-morning.	Showers, increasing late morning. Cloud 2000-3000ft, patchy lower cloud in showers. Fresh and gusty N winds. N to NW winds aloft 40-50 knots, easing 30-40 knots late morning. Turbulence and headwinds.	Chance of showers offshore/coastal areas. Cloud 3000-5000ft becoming patchy late morning. Light NE winds.	Likely CAVOK at the airport. Fog inland and isolated showers with 3000-5000ft cloud in far E TMA. Light NW winds becoming N late morning.
PM Wednesday	Showers. Cloud 2500-4000ft, lower in showers. Light NE to ESE winds.	Showers, easing early evening. Cloud 2500-4000ft, lower in showers. Moderate gusty N winds, becoming light N to NW during the evening. N to NW winds aloft 30-40 knots, easing mid-afternoon. Turbulence and headwind easing.	Patchy cloud 3500-5000ft. Chance of a shower afternoon, increased chance late evening. Light to moderate NNW to NE winds.	High-based showers. Chance of thunderstorms inland. Light to moderate NE to NW winds.
AM Thursday	Showers offshore, extending over land areas from late morning. Cloud 2500-4000ft, lower in showers. Light SSW winds, tending SE mid-morning.	Early fog areas in the TMA. Cloud mainly 2500-4000ft, with lower patches early morning. Light NW winds, becoming variable during the morning.	Rain increasing. Cloud above 5000ft lowering 2000-3000ft by midday, lower patches in rain. Light NE winds.	High-based showers. Light W to NW winds.
PM Thursday	Showers increasing. Slight chance of thunderstorms. Cloud 2500-4000ft, lower in showers. Light to moderate E to SE winds.	Light showers during the afternoon, with possible fog development during the evening. Cloud 2000-3000ft, clearing early evening. Light E to SE winds, tending N late evening.	Rain. Cloud 2000-3000ft, lowering to 1000-2000ft by early evening and lower in rain. Light NE winds, tending W to NW by early evening.	High-based showers tending to rain. Patchy cloud 1500-2500ft developing by early evening. Light W to NW winds turning S to SE afternoon, then NW overnight.
AM Friday	Showers offshore and coastal areas, moving ashore late morning. Cloud 2500-4000ft. Light S to SW winds becoming moderate SE late morning.	Cloud patches 2000-3000ft. Light to moderate N winds becoming fresh and gusty mid-morning. N to NW winds aloft 30-40 knots. Turbulence. Chance early wind shear. Headwinds.	Showers, easing early. Chance of early thunderstorms, more likely offshore. Cloud 2000-3000ft, lower showers. Light to moderate SW winds.	Showers offshore. Cloud 1500-2000ft lifting 2500-3000ft. Light W to NW winds.

Significant other phenomena potentially affecting Australian FIRs

Volcanic Ash (VA) ≥ FL200

For the latest advisories refer to <http://www.bom.gov.au/aviation/volcanic-ash/darwin-va-advisory.shtml>

Space Weather	As a result of recent activity on the Sun, G1 (Minor) planetary geomagnetic conditions are forecast to commence from 1300 UTC on 8 June 2026, +/- 10 hours. Impacts to aviation may include:Reduced performance of HF radio, particularly at higher frequencies. Minor intermittent degradation in GNSS performance across the polar regions.For the latest information and advisories refer to www.bom.gov.au/aviation/space-weather-advisories/
Tropical Cyclones	Nil current. Refer to https://www.bom.gov.au/weather-and-climate/specialised-forecasts-and-observations/tropical-cyclone

Weather risk assessment provided by NOMC Meteorological Unit – Bureau of Meteorology
Contact NCCMET for further detail or advice

Phone: 03 9235 7549
Email: nccmet@bom.gov.au

Detailed advice from major Airport MET CDM products available at Airservices NOMC Portal, <https://www.airservicesaustralia.com/noc/>

SYDNEY - YSSY GDP-A 2000-2012^

Tuesday 09 June 2026

ATFM-CDM Notes

METCDM Notes:

[1] 2000-2359: Reviewed: High pressure system over the Tasman Sea will be directing N'y flow over the TMA throughout the day. Surface winds expected to decouple and become light to moderate WNW to NW early morning.

Fog is observed inland and is mobile, particularly to the northwest around Richmond. Based on the location of the fog and distance from the airport, fog is unlikely to impact the airport, hence improved rates proposed in the 20Z and 21Z hours. However, there exists a slight chance of fog lifting into low cloud upon moving toward the airport and reaching the airport as low cloud prior to 23Z.

[2] 2000-0059: GDP cancelled due risks of fog/low clouds reduced.

[3] 2300-1259: NW surface winds becoming moderate N to NE during the afternoon and light N to NNW during the evening. Showers and 2000-5000ft cloud in E TMA easing and contracting eastwards. Whilst, there is chance of afternoon high based showers and cloud above 5000ft in W TMA. Slight risk of afternoon storms in far W TMA and in far E TMA during the evening. Given showers and storm risk are away from approach path and are not expected to significantly impact operations in the TMA, IVA rates has been indicated.

NCC DLM Notes:

[Nil DLM Notes]

SM Notes:

[1] 2000-2359: PRM not available due staffing

[2] 0000-0459: Missing 0630 and 0730 APP

GDP Notes

GDP in effect due to inclement morning conditions. Conditions will be monitored for any changes of significance.

Midday Update: CAVOK airport. Chance high-based showers W TMA afternoon. Light to mod NE winds becoming N to NW evening.

ATC ADVICE: 429 (215A/215D) Demand remains below capacity for the remainder of the day.

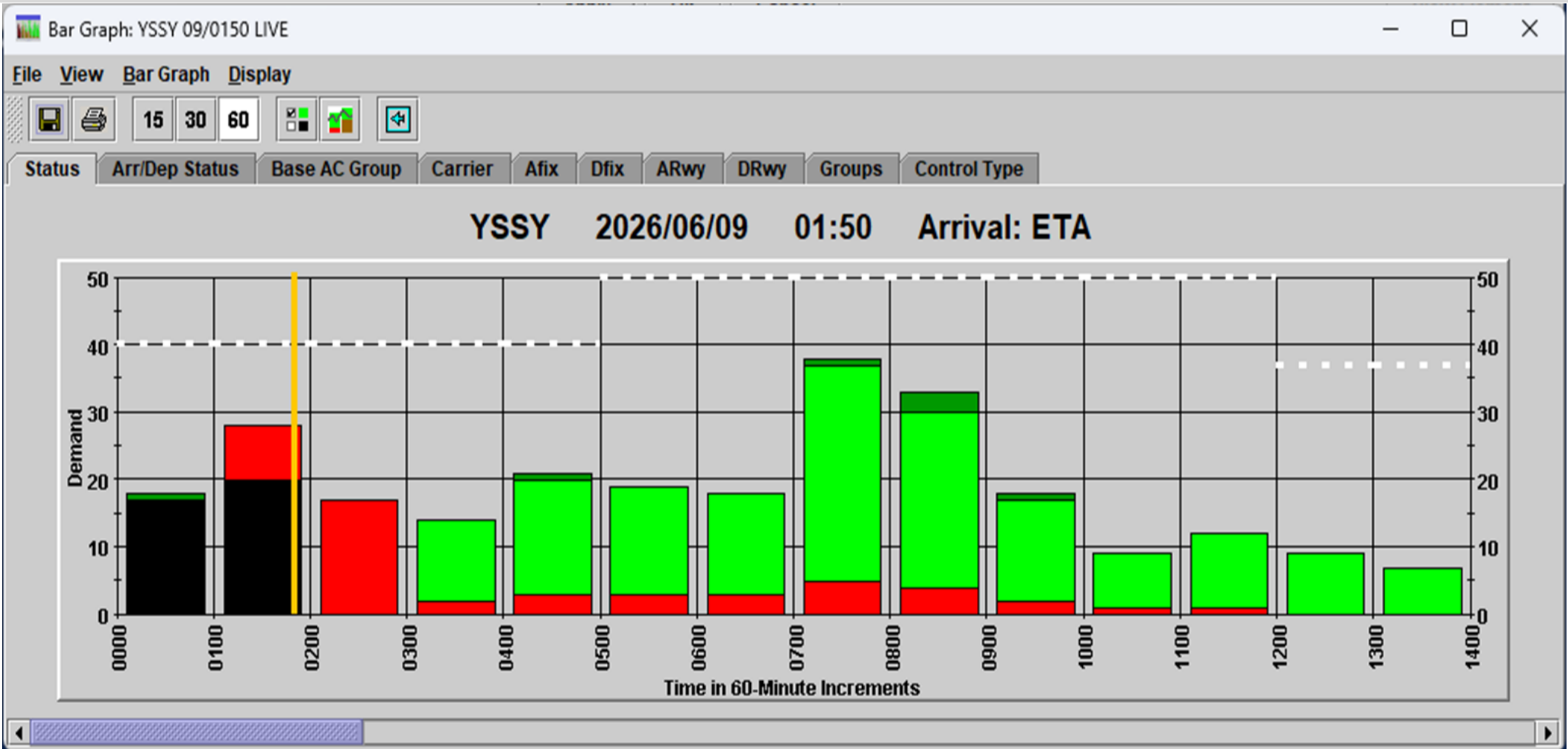
Tabulated Data

Time (Hour UTC)	090200	090300	090400	090500	090600	090700	090800	090900	091000	091100	091200
Runway Mode	34 IVA	34 IVA	34 IVA	34 IVA	34 IVA	34 IVA	34 IVA	34 IVA	34 IVA	34 IVA	34 IVA
Rate	40	40	40	50	50	50	50	50	50	50	37

Segmentation and Notes

METCDM Notes	1&2	1&2	1&2	1,2&3	2&3	3	3	3	3	3	3	3	3	3	3	3	0
Segmentation																	

Bar Graph



MELBOURNE - Nil GDP

Tuesday 09 June 2026

ATFM-CDM Notes

METCDM Notes:

[1] 2000-1359: Reviewed: no changes. High pressure system combined with an approaching front will be increasing the pressure gradient and N'ly flow over the TMA throughout the day. Moderate N'ly winds, gusty at times increasing during the afternoon and becoming fresh and gusty during the evening. There is higher chance of gusts exceeding 30 knots on RWY 34 from mid-afternoon. 30-40 knots N'ly winds increasing 40-55 knots from mid-afternoon, turbulence and similar values of headwind expected on RWY 34. There is risk of morning wind shear. CAVOK conditions expected with high based showers developing in TMA during the evening. Morning x-factor is for risk of wind shear while afternoon/evening x-factors are for gusts exceeding 30 knots on RWY 34 and 3000ft and below winds exceeding 40 knots.

[2] 0300-1359: Note for shift Manager: Aloft 30-40 knots N'ly winds will be increasing 40-55 knots from mid-afternoon. There is also good chance of surface gusts exceeding 30 knots on RWY 34 from mid-afternoon.

NCC DLM Notes:

[Nil DLM Notes]

SM Notes:

[Nil SMTM Notes]

GDP Notes

Nil significant operational risk/s identified at this stage.

Midday Update: Few cloud patches 2500-3000ft. High-based showers developing evening, mainly N TMA. Fresh & gusty N to NNE winds. N winds aloft 40-45 knots, increasing 45-55 knots early evening. Headwinds. Turb.

ATC ADVICE: 346 (184A/162D) Demand remains below capacity for the remainder of the day.

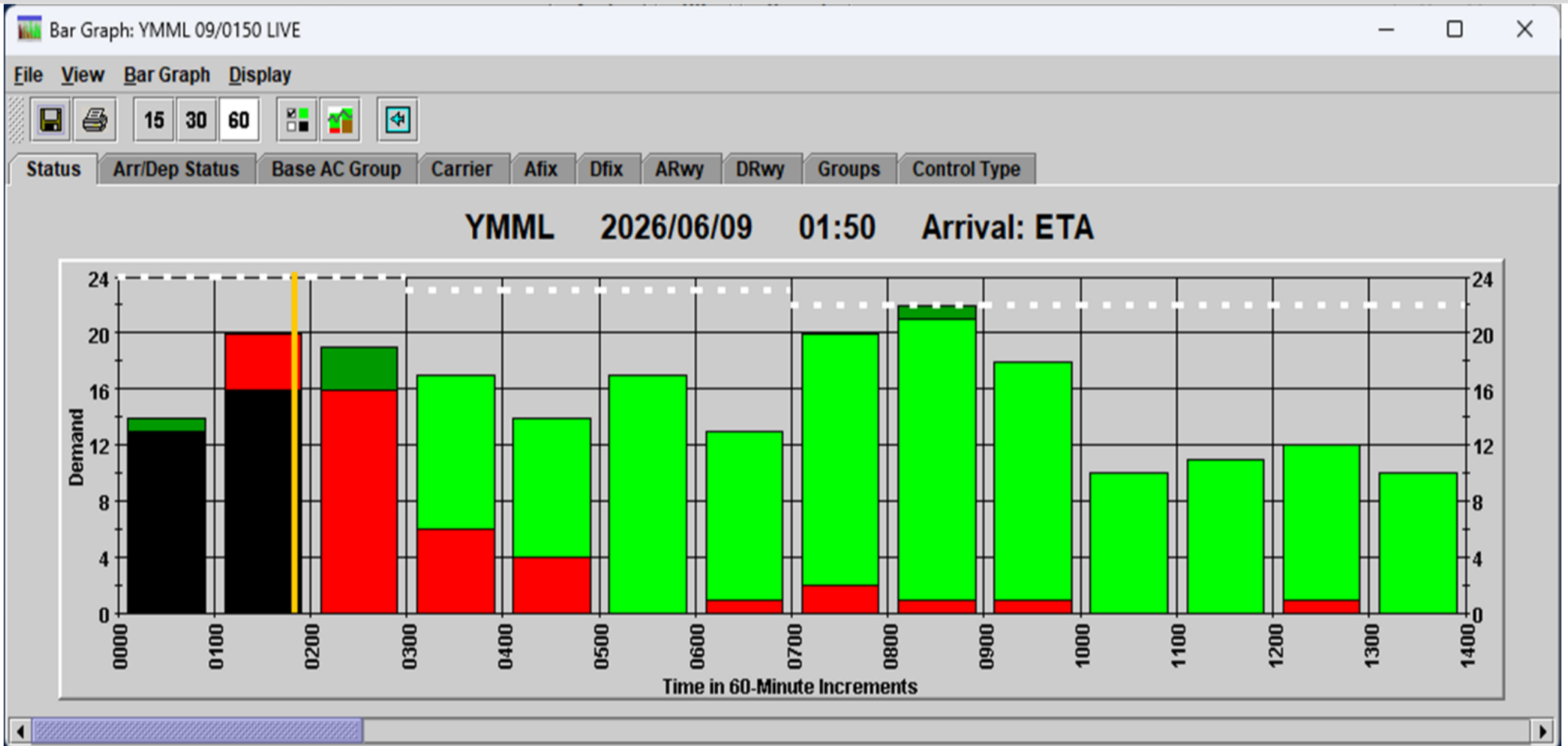
Tabulated Data

Time (Hour UTC)	082000	082100	082200	082300	090000	090100	090200	090300	090400	090500	090600	090700	090800	090900	091000	091100	091200	091300
Runway Mode	34 VMC	34 VMC	34 VMC	34 VMC	34 VMC	34 VMC	34 VMC	34 VMC	34 VMC	34 VMC	34 VMC	34 VMC	34 VMC	34 VMC	34 VMC	34 VMC	34 VMC	34 VMC
Rate	23	23	23	23	24	24	24	23	23	23	23	22	22	22	22	22	22	22

Segmentation and Notes

METCDM Notes	1	1	1	1	1	1	1	1&2	1&2	1&2	1&2	1&2	1&2	1&2	1&2	1&2	1&2	1&2
Segmentation																		

Bar Graph



BRISBANE - Nil GDP

Tuesday 09 June 2026

ATFM-CDM Notes

METCDM Notes:

[1] 2000-1259: C766/26

RWY 01R/19L CLSD DUE MAINTENANCE
FROM 06 090000 TO 06 090600

[2] 2000-1259: SODPROPS is not favourable throughout the day due to showers, low cloud and tailwind restriction.

[3] 2000-1259: Reviewed: no changes. High pressure system over the Tasman Sea will be directing E'ly flow over the TMA throughout the day. Showers easing and slowly contracting towards the coastline during the evening. Cloud 2000-3000ft lifting 2500-4000ft during the afternoon; cloud lower in showers. X-factor applied to account for impact of showers on approach. Surface winds expected to decouple and become SSW early morning then shift ENE to ESE by late morning and SE to SSW during the evening. Timing of runway change may vary by 1.5 hours.

NCC DLM Notes:

[Nil DLM Notes]

SM Notes:

[1] Night time rate

[2] 0000-0559: NOTAM C0766/26

GDP Notes

RWY 01R/19L closed as per NOTAM between 0000-0600. Nil significant operational risk/s identified at this stage.

Middy Update: Showers. Cloud 2500-4000ft, lower showers. Light to mod SE to ENE winds, becoming S to SW evening.

ATC ADVICE: 324 (183A/141D) Demand remains below capacity for the remainder of the day.

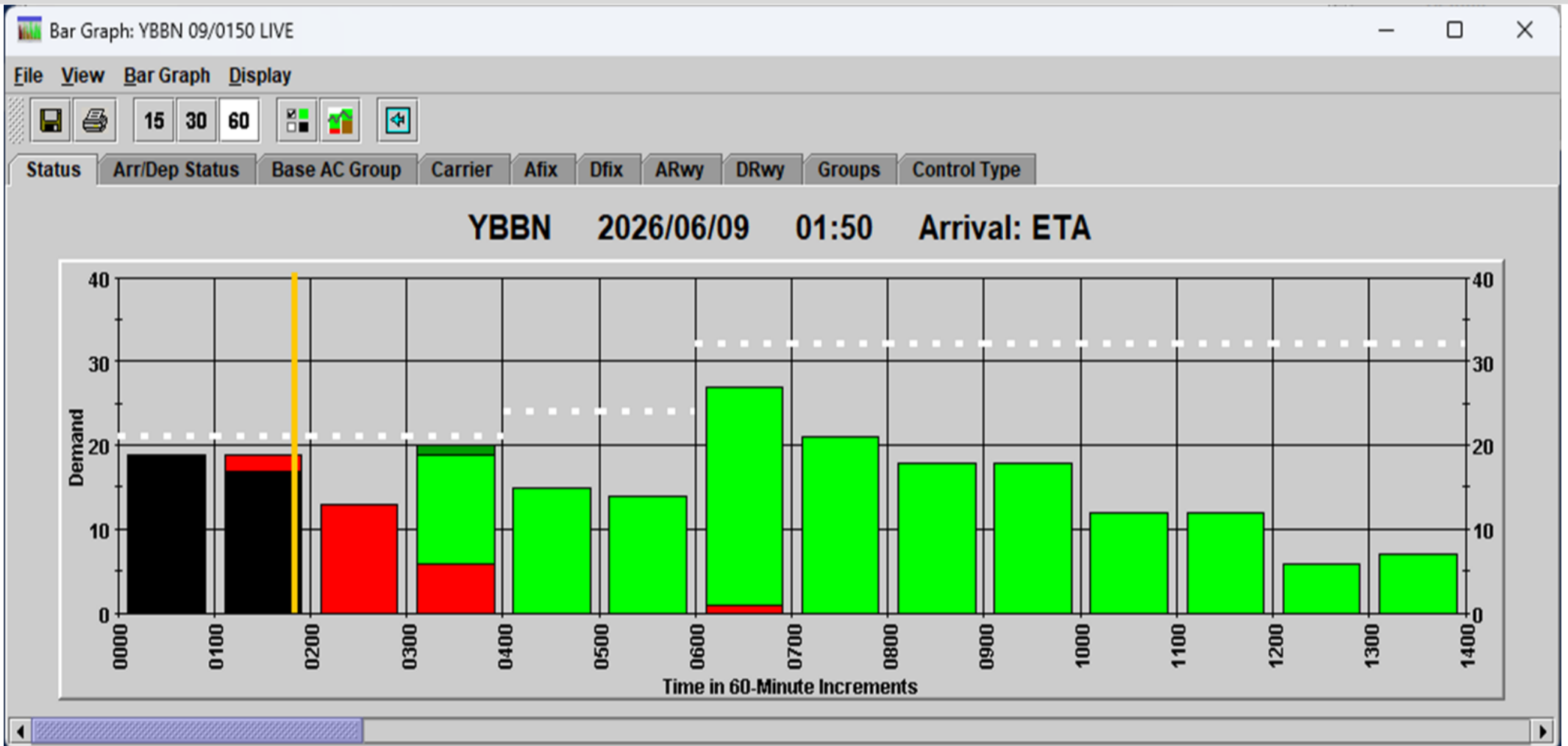
Tabulated Data

Time (Hour UTC)	082000	082100	082200	082300	090000	090100	090200	090300	090400	090500	090600	090700	090800	090900	091000	091100	091200	
Runway Mode	19 DEP ILS	19 DEP ILS	19 DEP ILS	19 DEP ILS	19 DEP ILS	01 DEP ILS	01 DEP ILS	01 DEP ILS	01 DEP VMC	01 DEP VMC	01 DEP VMC	01 DEP VMC	01 DEP VMC	19 DEP VMC	19 DEP VMC	19 DEP VMC	19 DEP VMC	
Rate	30	30	30	30	21	21	21	21	24	24	32	32	32	32	32	32	32	

Segmentation and Notes

METCDM Notes	1,2&3	1,2&3	1,2&3	1,2&3	1,2&3	1,2&3	1,2&3	1,2&3	1,2&3	1,2&3	1,2&3	1,2&3	1,2&3	1,2&3	1,2&3	1,2&3	1,2&3	0
Segmentation																		

Bar Graph



PERTH - YPPH GDP-A 0030-1400

Tuesday 09 June 2026

ATFM-CDM Notes

METCDM Notes:

[1] 2200-1359: Reviewed: no changes. Cold front is expected to move over the TMA overnight Monday with generally onshore flow over the area becoming SE to E with a ridge developing during the evening. Showers easing and becoming isolated during the afternoon and contracting to coastal and offshore areas during the evening. Slight risk of isolated storms in TMA early morning. Cloud 2500-4000ft lower in showers. X-factor applied during the likely period of showers significantly impacting operations in the TMA. Light to moderate WSW to SSW winds becoming S'ly during the afternoon and light SSE to ESE, possibly variable during the evening.

NCC DLM Notes:

[Nil DLM Notes]

SM Notes:

[1] 0000-0959: Rate of 25 as per TLI_26_115

GDP Notes

Nil significant operational risk/s identified at this stage.

Midday Update: Light showers, easing afternoon. Cloud 3000-5000ft. Light to mod SW winds, tending S late afternoon, then E to NE evening.
 ATC ADVICE: 311 (181/130) High demand throughout the next 2 hours and again between 08 and 12z. Possible delays if the demand shifts.

Tabulated Data

Time (Hour UTC)	82100	082200	082300	090000		090200	090300	090400	090500	090600	090700	090800	090900	091000	091100	091200	091300
Runway Mode		21/24 VMC	21/24 VMC	21/24 VMC		21/24 VMC	21/24 VMC	21/24 VMC	21/24 VMC	21/24 VMC	21/24 VMC	21/24 VMC	21/24 IMCA	21 IMCA	21 IMCA	21 IMCA	21 IMCA
Rate		25	25	25		25	25	25	25	25	25	25	25	24	24	24	24

Segmentation and Notes

METCDM Notes		1	1	1	1	1	1	1	1	1	1	1	1	1	1	1	1
Segmentation																	

Bar Graph

